

# **Important information for parents of NEW Primary School students for academic year 2023**

# Content

- 1. Overview of Pathlight School and Frequently Asked Questions (FAQs)**
- 2. School Information for Academic Year 2023**
  - School Hours
  - Attire & Grooming
  - School Café
- 3. Preparing for Day One at Pathlight School**
  - Day 1 at Pathlight & things to bring
  - Questionnaire for Primary 1 Students
- 4. Upcoming Important Dates**
  - Compulsory Orientation Activities
- 5. School Contact Information: 3 Modes of Communication**

# Overview of Pathlight School & FAQs

**Hear from our school leaders, students and parents about the school:**

- Our holistic curriculum and education programmes
- Autism-friendly approach
- Signature programmes

Click on the screen below to watch the video: [https://bit.ly/PLOrientation\\_OH](https://bit.ly/PLOrientation_OH)

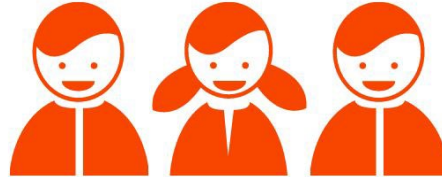




# School Information for Academic Year 2023



# SCHOOL HOURS



Primary School

7:50am – 1:00pm



## Punctuality

- Be in school by **7.50am**! Beyond this, it is considered late.
- As the School is practising staggered arrivals, students arriving with parents/guardians are to arrive in school **between 7:30am and 7.50am.**
- Latecomers are to report to the General Office. Student is NOT to go to class directly on his/her own

It is important to build good work habits from young.  
School takes a serious view on punctuality for school.

# SCHOOL ATTIRE

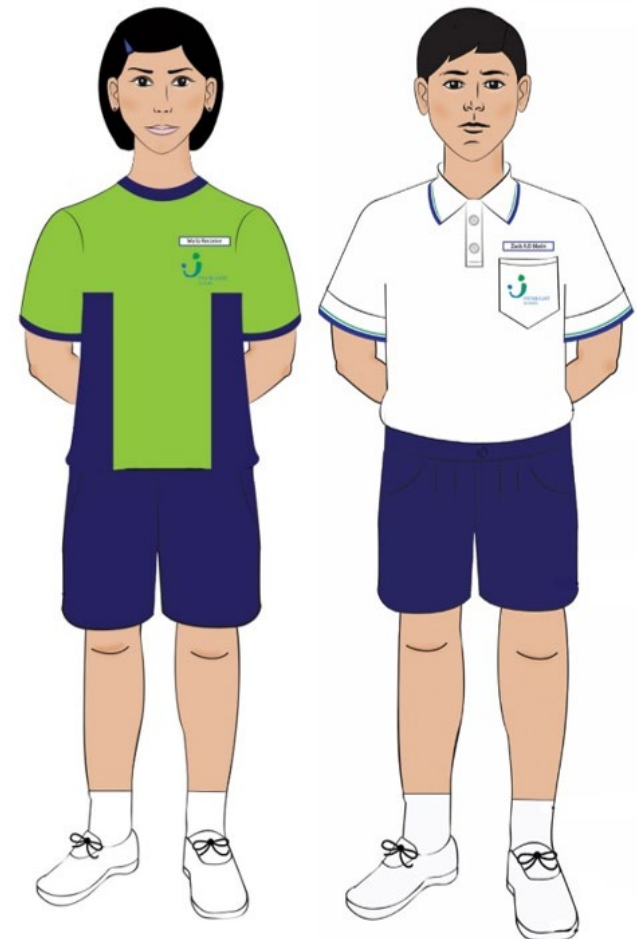
## Normal School days

### Primary School

-  ○ White Polo Shirt + bermudas
-  ○ White Polo Shirt + skorts

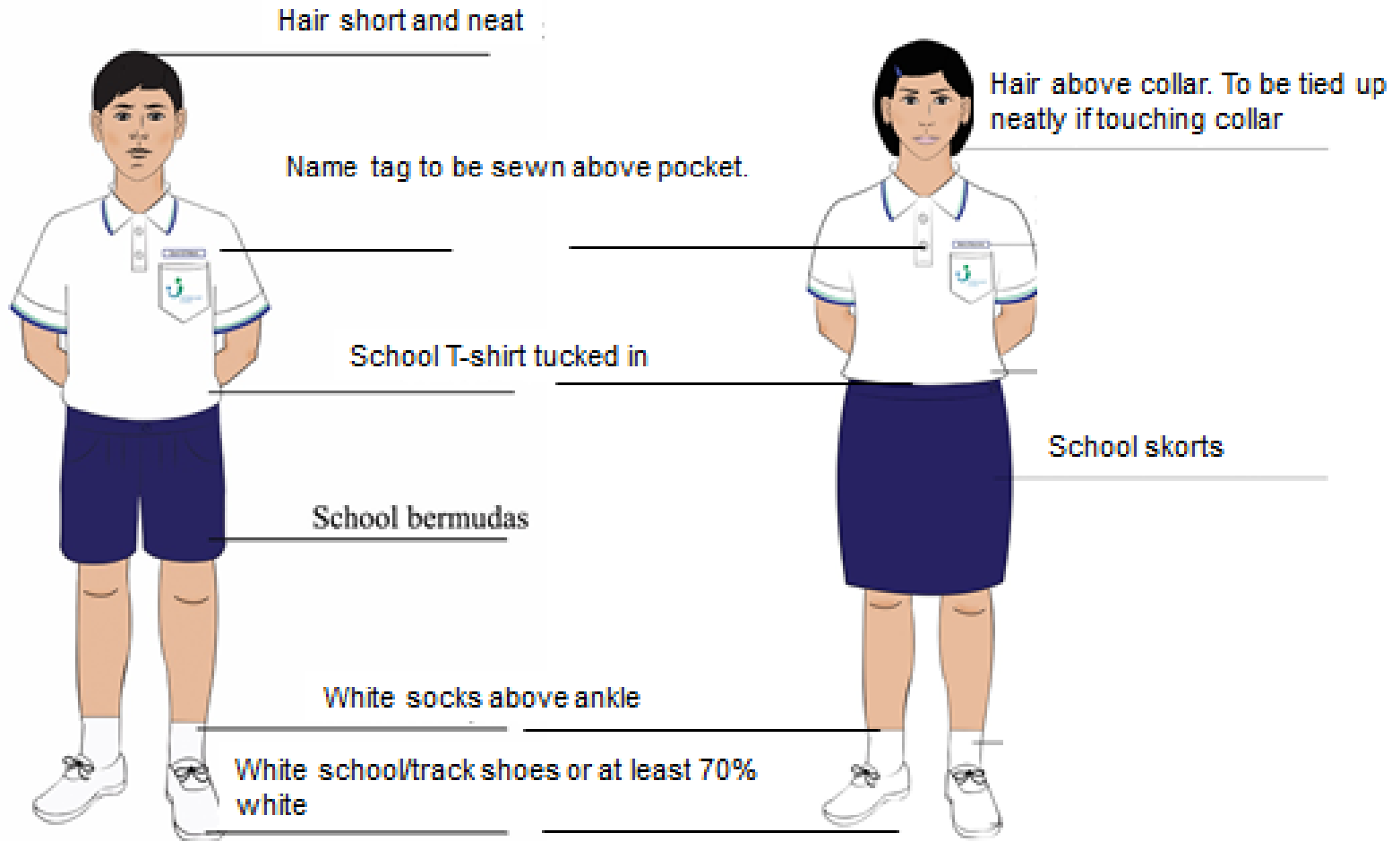
### PE /Gym days (as per timetable)

-   ○ Green PE Shirt and shorts



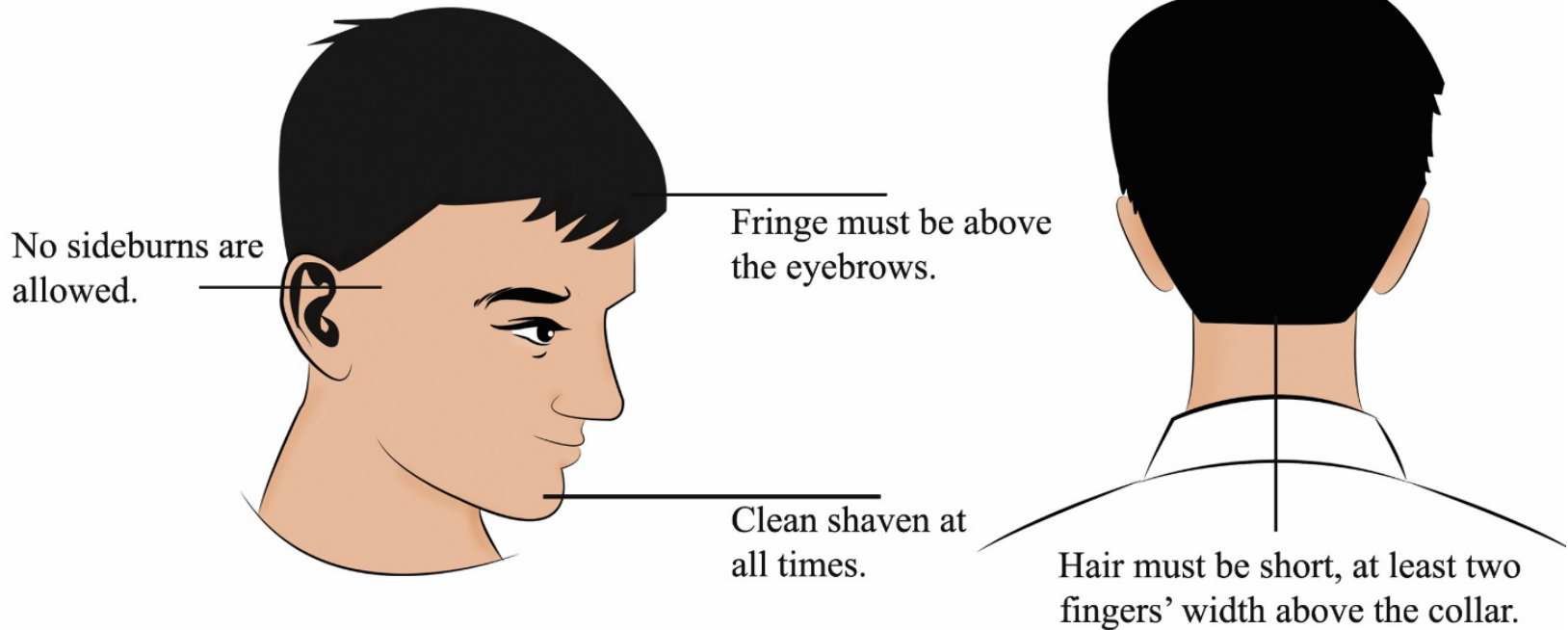
# SCHOOL ATTIRE

## Primary School



# GROOMING (BOYS)

Students should not dye, tint or highlight their hair.





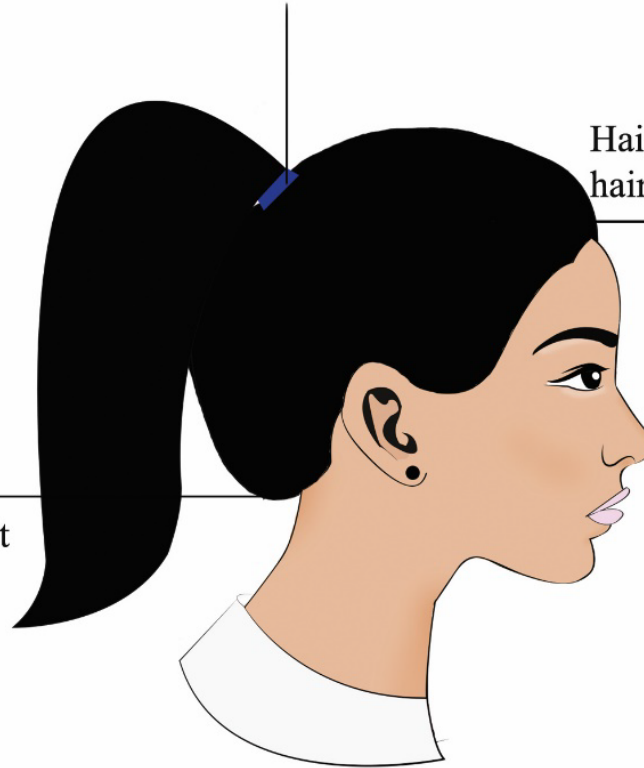
# GROOMING (GIRLS)

No fancy hair accessories are allowed. All hair clips or hair bands must be black, blue or brown in colour.

Hair should be kept off face using hair bands or clips.

Fringe must be above the eyebrow.

Hair that touches collar must be tied up neatly.



## NAME TAG

- Embroidered name tags
- Please follow student's name in Birth Certificate
- Ensure student wears plastic name tags to school – Given to parents during Registration (Helps teachers identify new students)



## CHILD'S HEALTH

- Inform Form Teacher if student has health issues (e.g. Asthma/Allergies/Epilepsy/Special Diet)

# PATHLIGHT CAFÉ (CAMPUS 1)

Managed by an inclusive workforce

## Variety of food available in café:

- Noodles kiosk,
- Burger and pizza kiosk,
- Small bites stall serving pies and wraps,
- Pasta and rice station (dishes change every day),
- Healthy bowl station serving salads, cupcakes and sandwiches,
- Fruit Juice stall



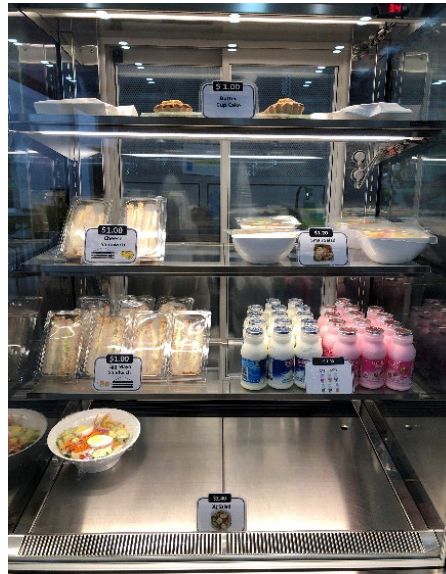


# PATHLIGHT CAFÉ (CAMPUS 2 MAIN)

Managed by an inclusive workforce

## Variety of food available in café:

- Noodles and rice stall (dishes change every day),
- Pastries and sandwiches







# PATHLIGHT CAFÉ (CAMPUS 2 ANNEX)

Managed by an inclusive workforce

## Variety of food available in café:

- Noodles kiosk,
- Pastry and pizza kiosk serving pies and wraps, cupcakes and sandwiches,
- Pasta and rice stations (dishes change every day),
- Soup and salad stall,
- Fruit juice and drinks stall





# PATHLIGHT CAFÉ (CAMPUS 1 & 2)

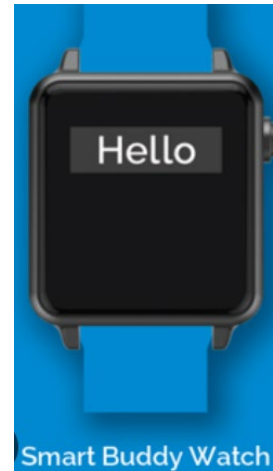
- Vending machine serving drinks with less sugar
- For 1<sup>st</sup> week of school, parents/guardians to pack food for your child/ward.



# PATHLIGHT CAFÉ – PAYMENT MODES

## 1. CASHLESS PAYMENT (RECOMMENDED)

- Students may use either Student Smartcard (EZ-Link card) or POSB Smart Buddy Card/Watch



Replacement of Smart Buddy watch is **not** available in School. Please visit:  
**Smart Buddy Watch Service Centre**  
3015A Ubi Road 1,  
#06-02, Singapore  
408705

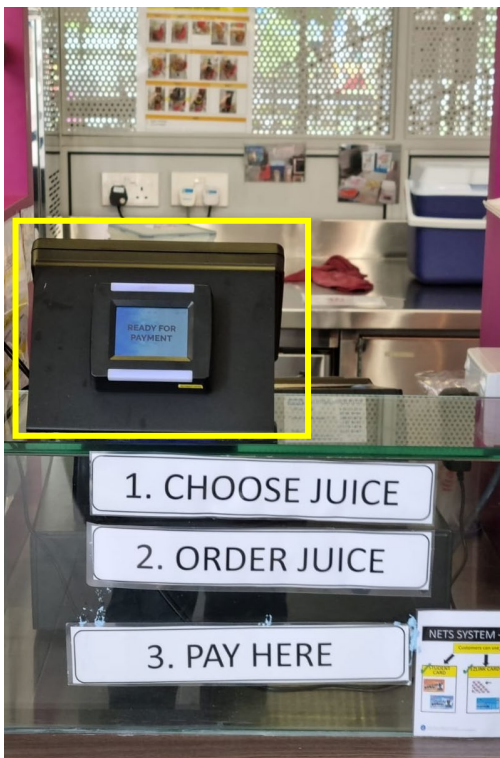
## 2. CASH PAYMENT WILL STILL BE ACCEPTED





# PATHLIGHT CAFÉ – PAYMENT MODES

## HOW TO MAKE CASHLESS PAYMENT?





# Preparing for Day One at Pathlight



PATHLIGHT  
SCHOOL

*Where lives are transformed*



# FIRST DAY OF SCHOOL (Primary School)

**Primary 1 students ONLY:** 3 January 2023, Tuesday

**Primary 2 – 6 students:** 4 January 2022, Wednesday

|                                     |  |                 |  |
|-------------------------------------|--|-----------------|--|
| <b>School Hours</b>                 | 7.50am – 1pm   |                 |  |
| <b>Arrival/<br/>Dismissal Times</b> |  | <b>Arrival</b>  | <b>Dismissal</b>   |
|                                     | <b>By School Bus</b>   | 7.00am – 7.30am | 1.00pm   |
|                                     | <b>By Parent/<br/>Guardian</b>   | 7.30am – 7.50am | To be shared during the virtual meet your child's teachers & classmates session on 29 December |
| <b>Venue*</b>                       | <b>Campus 1: Primary 1 - 4</b><br><b>Campus 2 Main: Primary 1 - 3</b><br><b>Campus 2 Annex: Primary 4 - 6</b><br><i>*Please refer to the information shared on Registration Day for your child/ward's class and reporting venue.</i> |                 |  |
| <b>Attire</b>                       | Pathlight School uniform with bermudas/skorts  |                 |  |

# DAY ONE AT PATHLIGHT



## What to Bring

- Pathlight Exercise Book
- Colour Pencils
- Coloured Files (from booklist)
- Pencil Case
- Water Bottle
- Pack snacks
- 1 storybook



## What to Wear

- School Uniform (white polo and bermudas/skorts)
- White socks
- White shoes
- Name tag for identification



- Please ensure **ALL** items (including shoes) are labelled with child's name.
- Please avoid roller bags for safety reasons.
- Please **do not bring books** on first day.

# Questionnaire for Primary 1 Students

**Help us to:**

- **Better understand** and **support the needs** of our students and families
- **Monitor our students' holistic development**

**Complete the questionnaire by 29 December 2022:**

<https://bit.ly/plq2023> (Or scan the QR Code)

If you have any questions or difficulties, please contact [parentsurvey@pathlight.org.sg](mailto:parentsurvey@pathlight.org.sg).



# Upcoming Important Dates



PATHLIGHT  
SCHOOL

*Where lives are transformed*



# COMPULSORY ONSITE BRIEFING (FOR PARENTS ONLY)

|                |   |
|----------------|---|
| <b>When</b>    | <b>Wednesday, 30 November 2022</b><br><b>9.00am to 11.00am</b><br><i>(Registration starts at 8.30am)</i>  |
| <b>Where</b>   | <a href="#"><u>Pathlight School, Campus 2 Main</u></a><br><a href="#"><u>6 Ang Mo Kio Street 44, Singapore 569253</u></a>   |
| <b>Who</b>     | <b>Parents Only</b><br><br>N/B: Due to capacity limits, <b>maximum 2 attendees (parents only)</b> .<br>Not suitable for children.   |
| <b>Content</b> | <ul style="list-style-type: none"><li>• Introduction of key school leaders</li><li>• What to Expect from Pathlight Primary School Education</li><li>• Fruitful Parent-School Partnership</li><li>• How to Prepare Your Child for School</li><li>• Key information for first day of school</li><li>• Q&amp;A Session</li></ul> |



# **COMPULSORY** MEET YOUR CHILD'S TEACHERS AND CLASSMATES (FOR PARENTS AND STUDENTS)

|                |  |
|----------------|--|
| <b>When</b>    | <b>Thursday, 29 December 2022</b><br><b>9.00am to 10.00am</b><br><i>Please log-in to the Zoom session by 8.50am</i>  |
| <b>Where</b>   | <b>Online</b> (Meeting link will be shared at a later time)  |
| <b>Who</b>     | <b>Parents and students</b>  |
| <b>Content</b> | <ul style="list-style-type: none"><li>• Getting to know one another</li><li>• Tips to prepare your child for school – how to use social story</li><li>• Communication modes with educators</li><li>• What to expect on Day 1</li></ul> |

# School Contact Information



**General Office  
Main Line**  
(7.30am - 4.30pm on  
weekdays, except Public  
Holidays)

Campus 1: 6459 9951  
Campus 2 Main: 6592 0511  
Campus 2 Annex: 6592 8925



**Hotline**  
(7am – 7pm on weekdays,  
except Public Holidays)

Campus 1: 9654 6729  
Campus 2: 9781 4807



**Email**

[queries@pathlight.org.sg](mailto:queries@pathlight.org.sg)



# SEE YOU!

