

Important information for parents of NEW Primary School students for academic year 2025

Pathlight School (Ang Mo Kio)

Content

1. Overview of Pathlight School

2. School Information for Academic Year 2025

- School Hours
- School Attire
- School Rules & School Fees Policy
- School Café
- Other Frequently Asked Questions (FAQs)

3. Preparing for Day One at Pathlight School

- Day 1 at Pathlight & Things to Bring
- Questionnaire for Primary 1 Students

4. Upcoming Important Dates

- Compulsory Orientation Activities

5. School Contact Information: 3 Modes of Communication

Overview of Pathlight School

Ms Linda Kho, Principal, shares how 'Pathlight is more than just a school'.



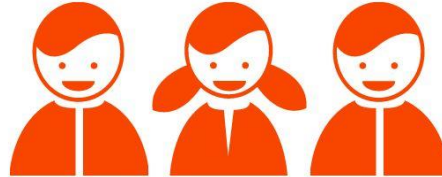
Click the video above or [this link](#) to watch



School Information for Academic Year 2025



SCHOOL HOURS



Primary School

7.50 am – 1.00 pm



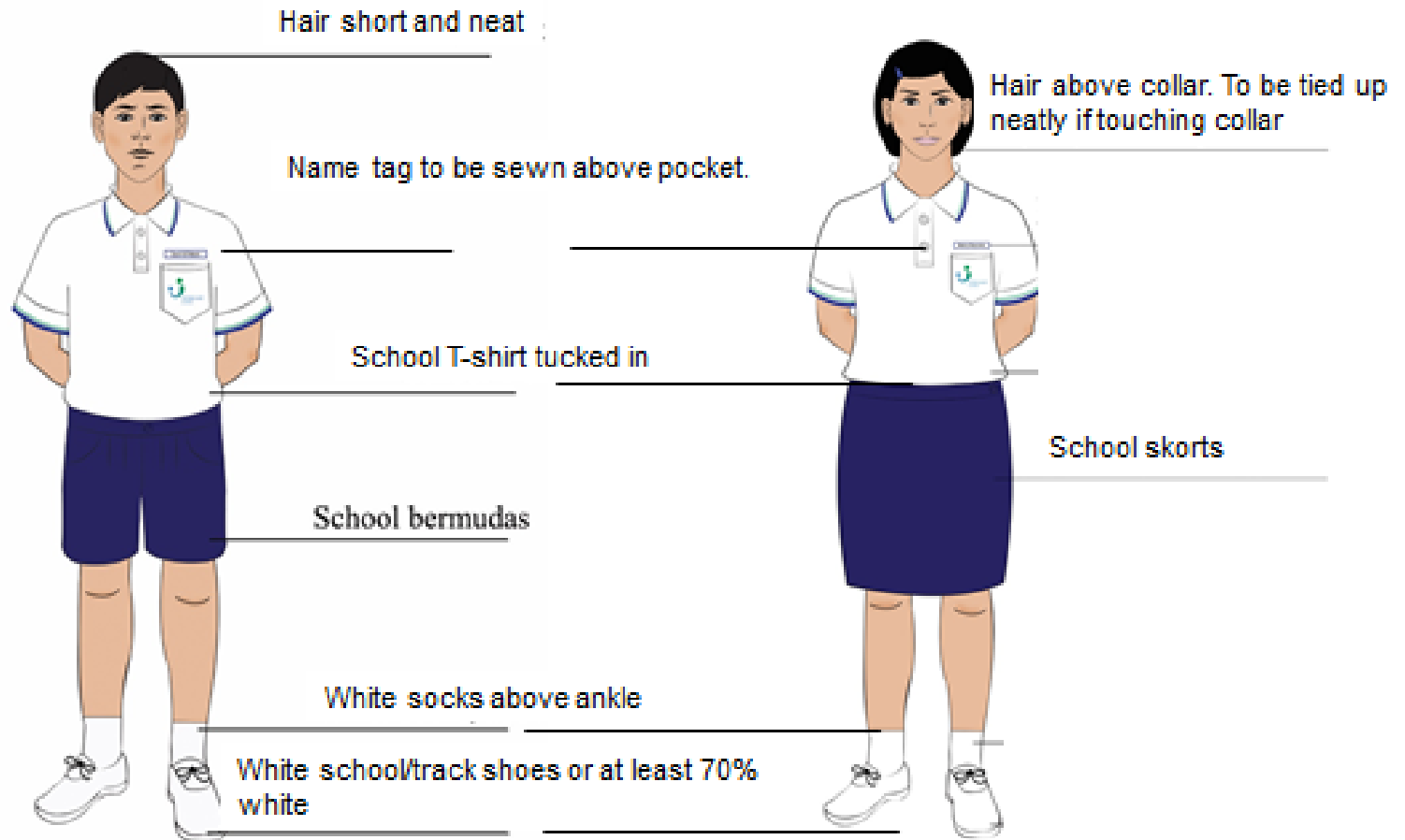
Punctuality

- Students should be in school by **7.50 am.**
- To facilitate the arrival of students by school buses, students arriving with parents/guardians are encouraged to arrive in school **between 7.30 am and 7.50 am.**
- Latecomers are to report to the General Office. Students should not go to class directly on his/her own.

It is important to build good work habits from young.
The School places a strong emphasis on punctuality.

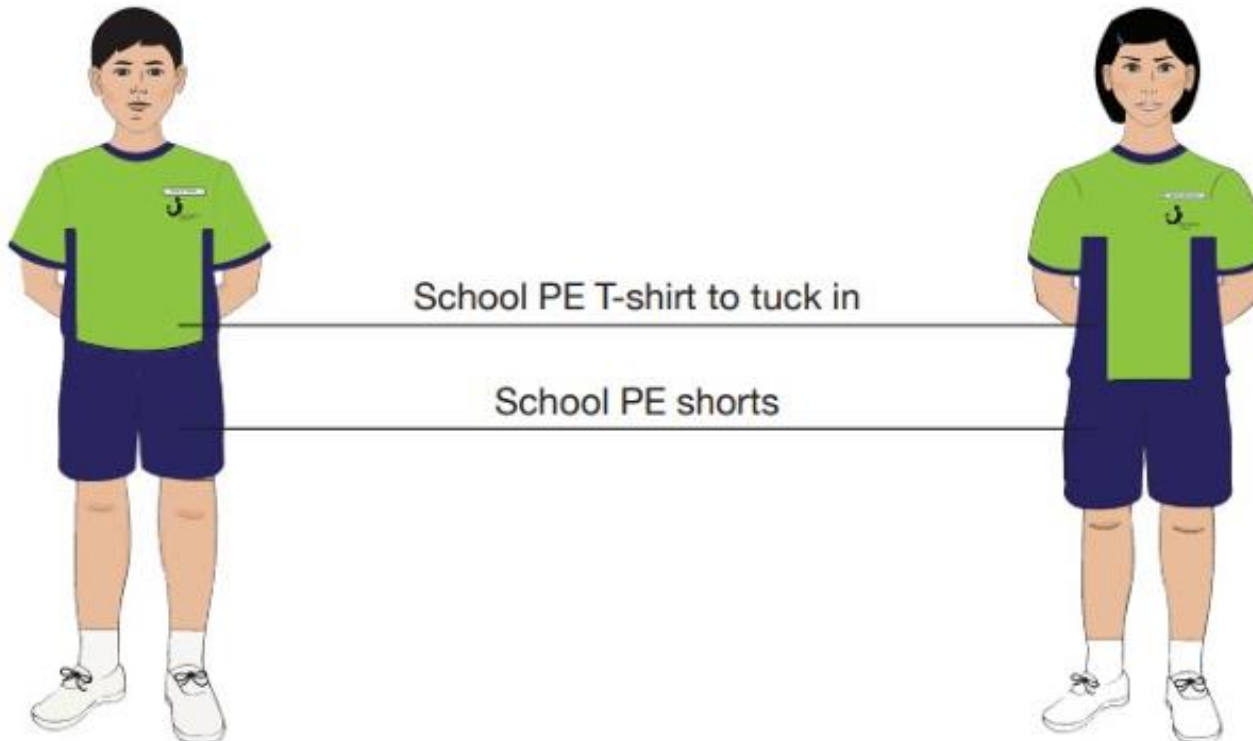
SCHOOL UNIFORM

Primary School



PE ATTIRE

School PE attire should be worn only on days when there is PE / Gym lesson.



SCHOOL FEES POLICY

- School fees will be collected via GIRO.
- Please ensure that there are sufficient funds in the bank account by the 20th of every month. A service charge of \$25 will be levied for unsuccessful GIRO deduction due to insufficient funds.
- For families who may need assistance, subsidies are available for those who meet the eligibility criteria. Please reach out to our Student Affairs department for support.

Please refer to Pathlight School website for more details on our **school rules and school fees policy**:

<https://www.pathlight.org.sg/about-us/school-rules>

PATHLIGHT CAFÉ (Professor Brawn Express)

Managed by an inclusive workforce

Variety of food available in café:

- Noodles, pasta, rice
- Sandwich, burger, pizza
- Salad, soup
- Small bites
- Fruit juice and drinks





PATHLIGHT CAFÉ

- Price range is between \$1 to \$3.
- Vending machine serving drinks with less sugar is available.
- Free fruits will be provided daily to encourage students to adopt healthy eating habits.



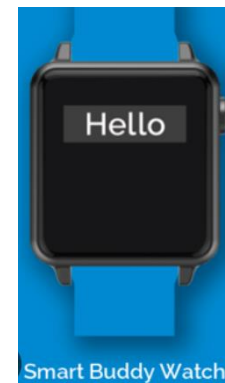
Parents/guardians, please pack food for your child/ward for the first week of school.



PATHLIGHT CAFÉ – PAYMENT MODES

1. CASHLESS PAYMENT (RECOMMENDED)

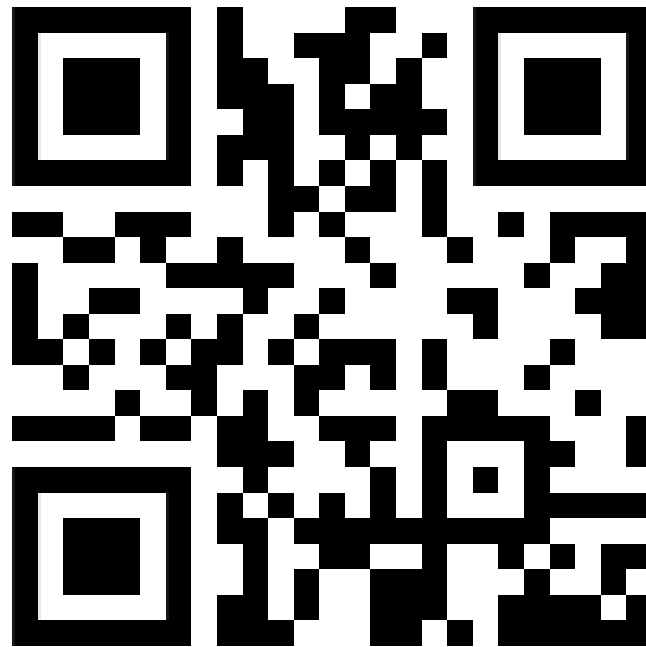
- Students may use either Student Smartcard (EZ-Link card) or POSB Smart Buddy Card/Watch



2. CASH PAYMENT WILL STILL BE ACCEPTED

Other Frequently Asked Questions (FAQs)

Scan the QR Code or click the link below for the FAQs:



https://bit.ly/PL_FAQS

Preparing for Day One at Pathlight



**PATHLIGHT
SCHOOL**

Where lives are transformed



FIRST DAY OF SCHOOL (Primary School)

Primary 1 students ONLY: 2 January 2025, Thursday

Primary 2 – 6 students: 3 January 2025, Friday

School Hours	7.50am – 1.00pm		
Arrival/ Dismissal Times		Arrival	Dismissal
	By School Bus	7.00am – 7.30am	1.00pm
	By Parent/ Guardian	7.30am – 7.50am	To be shared during the virtual meet your child's teachers & classmates session on Friday, 27 December 2024
Venue	Campus 1: Primary 1 - 2 Campus 2: Primary 3 - 6 <i>*Please refer to the information shared on Registration Day for your child/ward's class and reporting venue.</i>		
Attire	Pathlight School uniform with bermudas/skorts		

DAY ONE AT PATHLIGHT



What to Bring

- Pathlight Exercise Book
- Colour Pencils
- Coloured Files (from booklist)
- Pencil Case
- Water Bottle
- Pack snacks
- 1 storybook



What to Wear

- School Uniform (white polo and bermudas/skorts)
- White socks
- White shoes
- Name tag for identification



- Please ensure **all items** (including shoes) are labelled with your child's name.
- For safety reasons, please avoid roller bags.
- Your child will **not** be required to bring books on the first day.

Questionnaire for Primary 1 Students

Help us to better understand and support the needs of your child/ward and family!

- **Complete a questionnaire by 27 December 2024:**
<https://bit.ly/plq25>
- If you have any questions or difficulties, please contact
parentsurvey@pathlight.org.sg

Upcoming Important Dates



**PATHLIGHT
SCHOOL**

Where lives are transformed



COMPULSORY ONSITE BRIEFING (FOR PARENTS ONLY)

When	Wednesday, 27 November 2024 9.00am to 11.00am <i>(Registration starts at 8.30am)</i>
Where	Pathlight School (Ang Mo Kio Campus 1) 5 Ang Mo Kio Avenue 10, Singapore 569739
Who	Parents Only <i>N/B: Due to capacity limits, we seek your understanding that we can only accommodate maximum 2 attendees (parents only). As the programme includes a sit-down presentation, we would advise parents not to bring your child along.</i>
Content	<ul style="list-style-type: none">• Introduction of key school leaders• What to Expect from Pathlight Primary School Education• Fruitful Parent-School Partnership• How to Prepare Your Child for School• Key information for first day of school• Q&A Session



COMPULSORY MEET YOUR CHILD'S TEACHERS AND CLASSMATES (FOR PARENTS AND STUDENTS)

When	Friday, 27 December 2024 9.00am to 10.00am <i>Please log-in to the Zoom session by 8.50am</i>
Where	Online (Meeting link will be shared at a later time)
Who	Parents and students
Content	<ul style="list-style-type: none">• Getting to know one another• Tips to prepare your child for school – how to use social story• Communication modes with educators• What to expect on Day 1

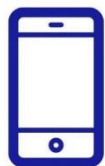
School Contact Information



**School Phone
(General Office)**
(7.30am - 4.30pm on
weekdays, except Public
Holidays)

Pathlight School (Ang Mo Kio)

Campus 1: 6459 9951
Campus 2: 6592 8925



Hotline
(7.00am – 5.30pm on
weekdays, except
Public Holidays)

Campus 1: 9654 6729
Campus 2: 9781 4807



Email

studaff@pathlight.org.sg



SEE YOU!